



ELECTRICAL
MECHANICAL
INSULATION

CSNUSA



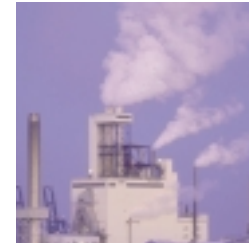
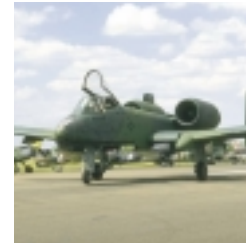
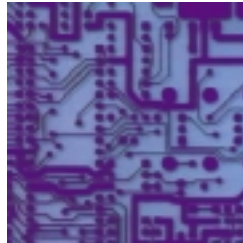
FLAME
RETARDANT



2:1
STANDARD
SHRINK RATIO

Thin Wall
Crosslinked Polyolefin

CPX 100

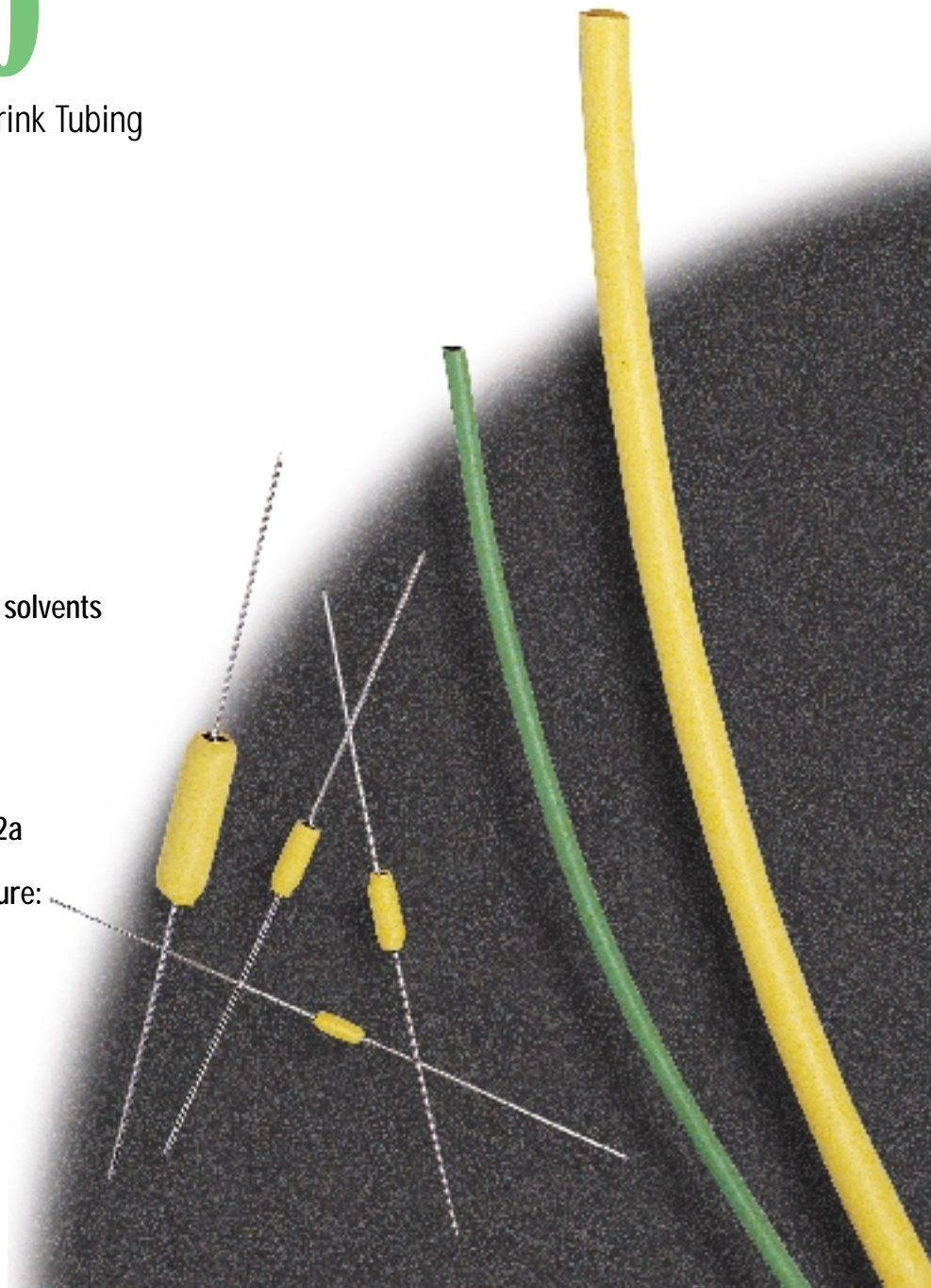


CPX 100

Flexible, multi-purpose Heat Shrink Tubing

Features

- Flame retardant
- Resistant to common fluids and solvents
- Meets UL 224, 125°C;
CSA C22.2 No. 198.1, 125°C;
MIL-DTL-23053/5 Class 1&2;
AMS 3636 & 3637;
DEF STAN 59-97, Issue 3, Type 2a
- Continuous Operating Temperature:
-55°C to 135°C
- Shrink temperature: 120°C



Technical Data

Physical

Property	Test Method	Typical Performance
Tensile Strength	ASTM D2671, ISO 37	2200 psi (15.0 MPa)
Elongation	ASTM D2671, ISO 37	400%
Longitudinal Change	ASTM D2671	+/-5%
2% Secant Modulus	ASTM D2671	16000 psi (110 MPa)
Specific Gravity	ASTM D792, ISO/R1183	1.3 [colors] 0.95 [clear]
Restricted Shrinkage	ASTM D2671	No Cracking
Elongation after Heat Aging (168hrs at 175°C)	ASTM D2671	350%
Heat Shock (4hrs at 250°C)	ASTM D2671	No cracking or flowing
Low Temperature Flexibility (4hrs at -55°C)	ASTM D2671	No cracking or splitting
Flammability	ASTM D2671	Flame Retardant (except Clear)

Electrical

Dielectric Strength	ASTM D2671, IEC 243	600 V/Mil (24kV/mm)
Volume Resistivity	ASTM D2671	10 ¹⁶ ohm-cm

Chemical

Fluid Resistance	MIL-DTL-23053/5, ISO 1817, ISO 37	Good to Excellent
Copper Corrosion	ASTM D2671	No Corrosion
Water Absorption	ASTM D570	0.2%
Fungus Resistance	ASTM G21	No Growth

CANUSA

There's no end to what we cover

CANUSA-EMI is a global company providing electrical and mechanical insulation solutions for a variety of industries and applications. Starting from products created by extensive developmental research at Shaw Industries (incorporated 1955), CANUSA-EMI is a recognized world leader in the provisioning of high quality heat shrink products.

EUROPE

CANUSA SYSTEMS LIMITED

Bergstrand House

Broadley Industrial Park

Roborough, Plymouth, U.K. PL6 7EZ

Tel: 44 (0) 1752-209880

Fax: 44 (0) 1752-209850

U.S.A.

CANUSA - EMI

P.O. Box 498830

Cincinnati, Ohio 45249

Tel: 1-800-422-6872

Tel: (513) 683-7800

Fax: (513) 683-7809

CANADA/INTERNATIONAL

CANUSA - EMI

25 Bethridge Road

Toronto, Ontario M9W 1M7

Tel: 1-800-845-6808

Tel: (416) 743-7111

Fax: (416) 743-7199

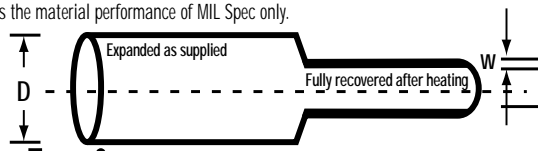
WORLDWIDE WEB: www.canusa-emi.com

All information contained in this leaflet is believed to be reliable. We advise however that customers should separately evaluate the suitability of our products for their particular application. CANUSA-EMI and Shaw Industries give no guarantees in respect of the accuracy or sufficiency of the information presented and disclaim any liability regarding its use. Our responsibilities are only those listed in our Standard Terms and Conditions of Sale for these products. In no instance will we be liable for any eventual, indirect, or consequential damage or damages arising from the sale, resale, transfer, use or misuse of the product.

Dimensions

ORDER REF. NO. METRIC	ORDER REF. NO. IMPERIAL	EXPANDED		RECOVERED		WALL THICKNESS (NOM)		STANDARD LENGTHS				
		INTERNAL DIAMETER (MIN)	INTERNAL DIAMETER (MAX)	INTERNAL DIAMETER (MIN)	INTERNAL DIAMETER (MAX)	mm	IN	AA m	BB ft			
XXXX	YYYY	mm	D	IN	mm	d	IN	mm	w	IN	AA m	BB ft
0012	0047	1.2	3/64		0.6	3/128		0.45	0.018		150	1000
0016	0063	1.6	1/16		0.8	1/32		0.45	0.018		150	1000
0024	0094	2.4	3/32		1.2	3/64		0.51	0.020		150	1000
0032	0125	3.2	1/8		1.6	1/16		0.51	0.020		150	1000
0048	0187	4.8	3/16		2.4	3/32		0.51	0.020		75	1000
0064	0250	6.4	1/4		3.2	1/8		0.64	0.025		75	500
0095	0375	9.5	3/8		4.7	3/16		0.64	0.025		75	500
0127	0500	12.7	1/2		6.4	1/4		0.64	0.025		75	200
0160	0625	16.0	5/8		8.0	5/16		0.76	0.030		75	200
0190	0750	19.0	3/4		9.5	3/8		0.76	0.030		75	100
0254	1000	25.4	1		12.7	1/2		0.89	0.035		30	100
0320	1250	32.0	1 1/4		16.0	5/8		0.89	0.035		30	100
0381	1500	38.1	1 1/2		19.0	3/4		1.02	0.040		30	100
0508	2000	50.8	2		25.4	1		1.14	0.045		30	100
0762	3000	76.2	3		38.0	1 1/2		1.27	0.050		15	50
1016	4000	101.6	4		50.8	2		1.40	0.055		15	50

* Meets the material performance of MIL Spec only.



Ordering

Select a dimension which will shrink snugly over the component to be covered. If recovery is restricted the resultant wall thickness will be less than specified.

To Order in Metric Units:

CPX 100 - ^{Order Ref. No.}XXXX - ^{Options}CC - ^{Standard Length}OO - AA - M

To Order in Imperial Units:

CPX 100 - ^{Order Ref. No.}YYYY - ^{Options}CC - ^{Standard Length}OO - BB - I

Standard Colors (CC)

Order Code	Color	Order Code	Color
BK	BLACK	BE	BLUE
RD	RED	YW	YELLOW
WE	WHITE	GN	GREEN
CR	CLEAR		

Options (OO)

Unprinted	00
Printed	01

* For additional colors please see price list.

* Clear is not flame retardant.

Lengths: Supplied on continuous reels or 48" (1.2 m) lengths

Standards: UL 224, 125°C; CSA C22.2 No. 198.1, 125°C; MIL-DTL-23053/5 Class 1 & 2; AMS 3636 & 3637; DEF STAN 59-97, Issue 3, Type 2a

Note: Non-standard colors, sizes and lengths available subject to factory quotation. **REV 2**